

Abbey Gardens, Canterbury, CT2 7EU

£2,500 Per Month



Abbey Gardens

Canterbury CT2 7EU

This lovely family furnished home is available to rent from End of March 2026. The property is detached with off road parking for 2 cars. Entrance hallway leading into sitting room with wooden flooring. Study/bedroom 4, fitted kitchen with granite worksurfaces and Quooker tap, washing machine, dishwasher and large fridge freezer. Downstairs WC. Conservatory leading to rear enclosed garden with access onto Market Way. Upstairs you will find 3 double bedrooms, master en suite shower room and family bathroom.

Available End of March 2026

Rent £2,500 per month is EXCLUSIVE of all utilities.

Council Tax: D

Furnished

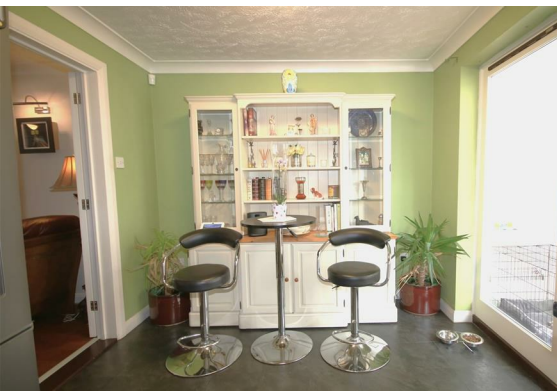
Deposit is equal to 5 weeks rent £2,884.61

This can be paid anytime, until your tenancy begins (EXCLUDING Holding Deposit)

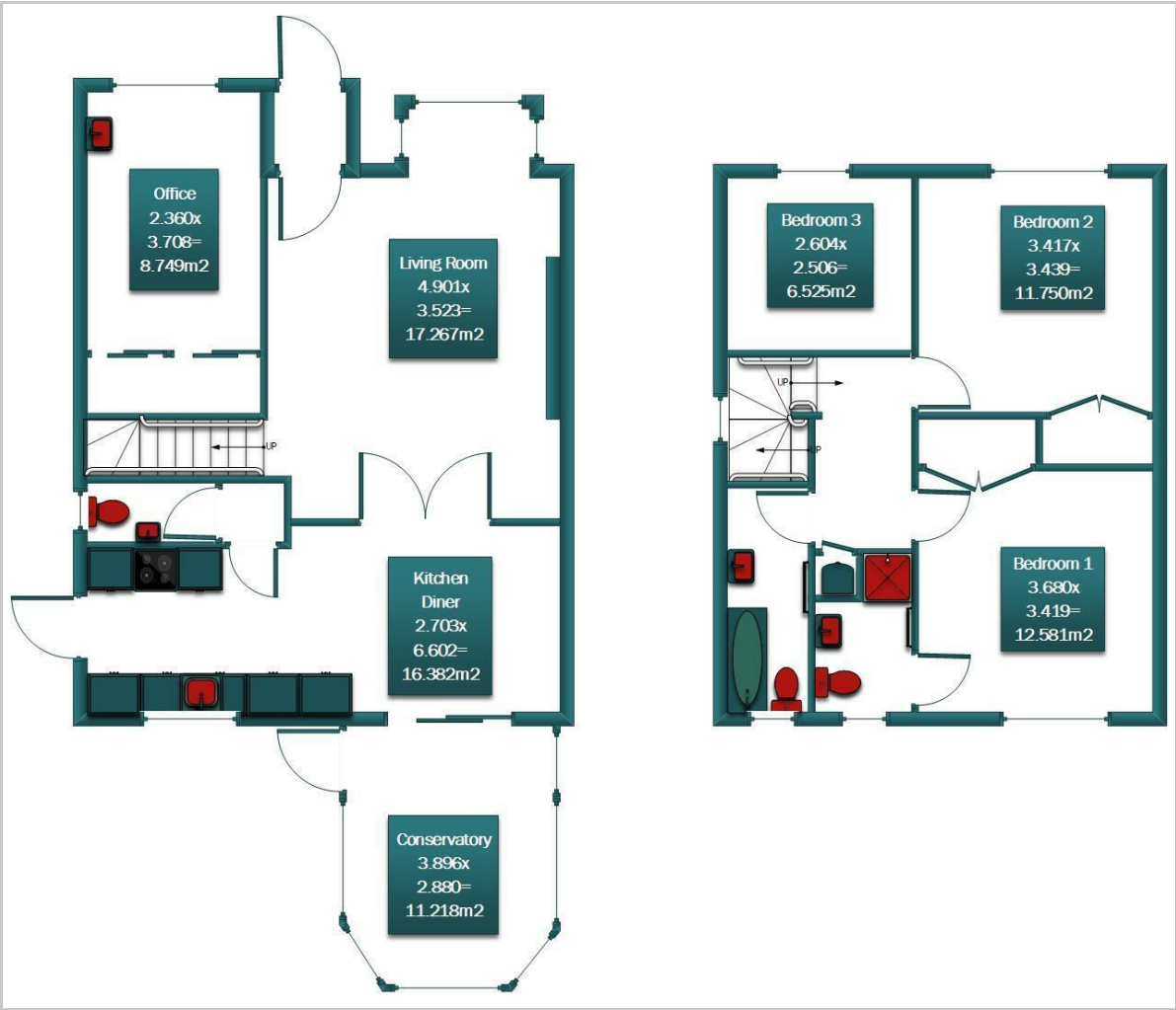
All viewings are strictly by appointment only.

Please refer to the fee's tab on our website (www.sallyhatcher.co.uk) for all information on fee's and deposit options





Floor Plan



Viewing

Please contact us on 01227 733888 if you wish to arrange a viewing appointment for this property or require further information.

These particulars, whilst believed to be accurate are set out as a general outline only for guidance and do not constitute any part of an offer or contract. Intending purchasers should not rely on them as statements of representation of fact, but must satisfy themselves by inspection or otherwise as to their accuracy. No person in this firms employment has the authority to make or give any representation or warranty in respect of the property.

Area Map



Energy Efficiency Graph

